

CTU

❖ The equipment purchasing

- Funding transfer from MARE to CTU account on August, 2020 (done)
- VAT payment by CTU (done)
- Proposed equipment list (done)
- Quotation requirement provided by three companies (done)
- Letter submitting for an approval of the equipment list and funding from the Ministry of Natural resources and Environment and Ministry of Finance (Done)
- Contractors bidding selection/assessment (Done)
- Submitting, appraising, approving and publicizing contractor selection results. (Done)
- Sign the contract with the contractor (Done)

❖ Installation of the equipment

- Designing the room, facilities for establishing computer lab (Done)
- The contractor provides equipment according to the agreed contract time (Done)
- Installation of equipment (in progress)
- Trial operation and Acceptance checking (not yet)

❖ Installation of eLearning Platform (in progress)

1. List of necessary devices

Serial	Device name	Amount
1	Polycom Group 310 HD Codec	1
2	Camera Zoom 12x	1
3	Multi-directional Microphone	1
4	HD Ezcap 284 Video Capture + WD 2TB Hard Drive	1
5	4-in-1 HDMI splitter, 3D, 4K*2K supported	1
6	INFOCUS INF6540e 65" Interactive Screen	1
7	Dell Inspiron 5593 Laptop	1
8	All-in-one HP ProOne 600 G4 AiO 21.5-inch FHD Touch Computer	1
9	Nec NP-MC422XG Projector	1
10	TOA A-2120 H Amplifier	1
11	F-1300BT Sound Box	2
12	TOA WS-422-AS Wireless Microphone	2
13	Rack Cabinet 8U	1



***** The supplier will help install the INFOCUS INF6540e 65" Interactive Screen and Projector.**

2. Auditorium view





Co-funded by the Erasmus+ Programme of the European Union

MARE WP3.1 Deployment and implementation of E-MARE



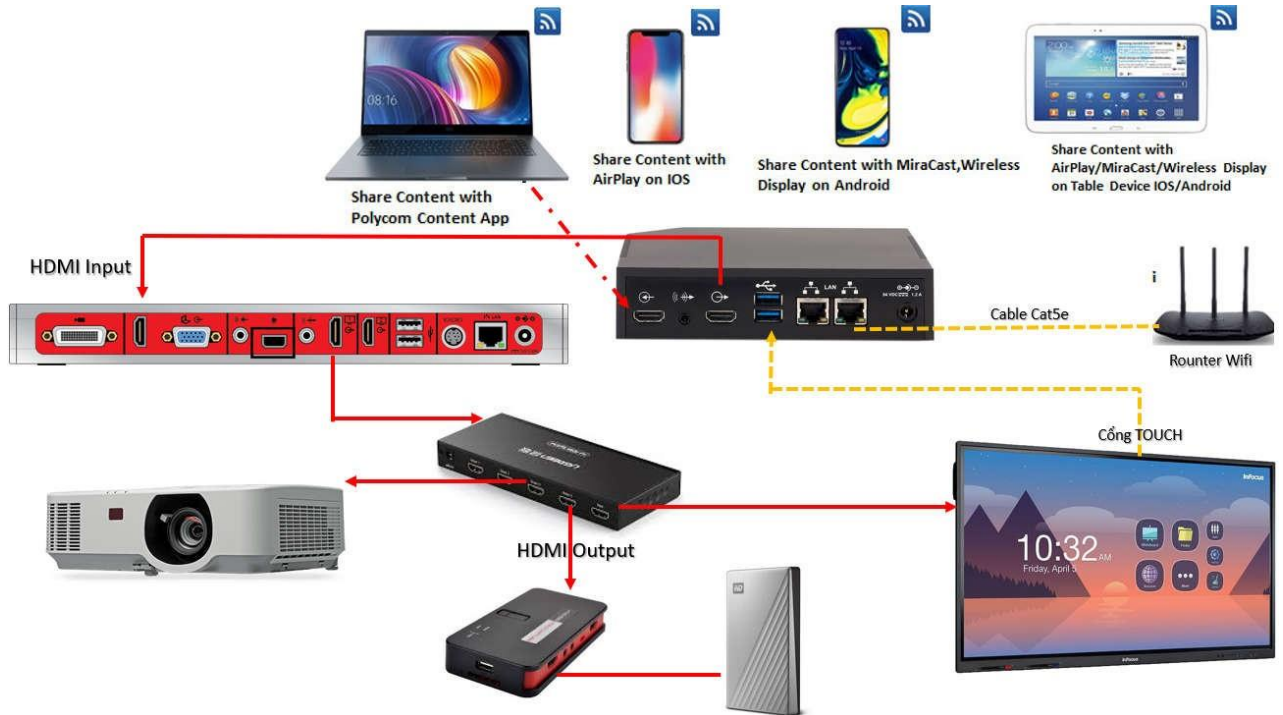
3. Devices' connection plan

*The European Commission's support for the production of this publication does not constitute an endorsement of the contents, which reflect the



Co-funded by the Erasmus+ Programme of the European Union

MARE WP3.1 Deployment and implementation of E-MARE



The plan of connecting devices

***** Necessary wires/ports are available with devices**

1.	RealPresence Group 310-720p	Cables: 1 HDMI 1.8m, 1 CAT 5E LAN 3.6m, 1 HDCI digital 3m, Power: EURO-Type C, CE 7/7. Maintenance Contract Required
2.	Polycom Pano. Wireless Presentation System	Cables: 1 HDMI 1.8m, 1 CAT 5E LAN 3.6m, 1 USB Type-B 2m, Power: KOREA - Type C, KSC 8305.

4. The location/position of devices

**** Note: An observation and agreement with investor are needed.**

- The smart interactive screen + Codec 310 + Polycom Pano + Camera are installed on the TV portable pole mount arm (notably additional devices/accessories).
- Projector is put on the table. The stage's wall is utilized as the screen.
- The rack cabinet 8U remains the amplifier, wireless microphone WS422.
- Sound boxes are installed on the wall of stage's wings.